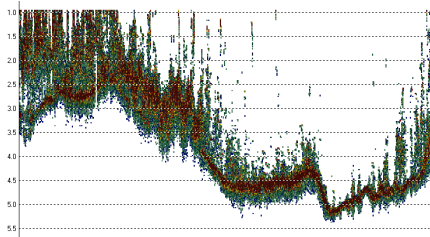




## ***High Definition Soundings***

Full water column echogram recorded for absolute accuracy.



## ***Any Boat Anywhere***

Rugged waterproof echo sounder and GNSS in one. Streamlined data collection process with touchpad controls and internal battery.

## ***20 Hz Ping Rate***

Get total bottom coverage for maximum quality control and a clear view of the bottom.

## ***Top Quality Precision GNSS***

Single and dual frequency, L-Band and RTK positioning options built-in. No cables; no problems.



## ***Integrated UHF Radio***

Choose the RTK option and connect to your existing RTK base station with no need for an external radio.



## ***On-Board Data Logger***

Record data on internal memory or an external USB drive. Output in real time through Ethernet, Bluetooth, Wi-Fi, or RS232 cable.