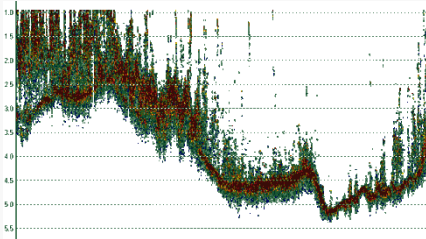




## ***High Definition Soundings***

Full water column echogram recorded for absolute accuracy.



## ***Internal Battery***

Survey for 8 hours without recharging. Ideal for small boats and personal watercraft.

## ***20 Hz Ping Rate***

Get total bottom coverage for maximum quality control and a clear view of the bottom.

## ***Use with any GPS Receiver***



Pass NMEA0183 GPS into the CEE ECHO to get a complete time-stamped hydrographic data set.

## ***Dual Frequency Capable***

Standard, narrow beam and dual frequency transducers.



## ***On-Board Data Logger***

Record the survey on internal memory or an external USB drive. Output in real time through Ethernet, Bluetooth, Wi-Fi, or RS232 cable.